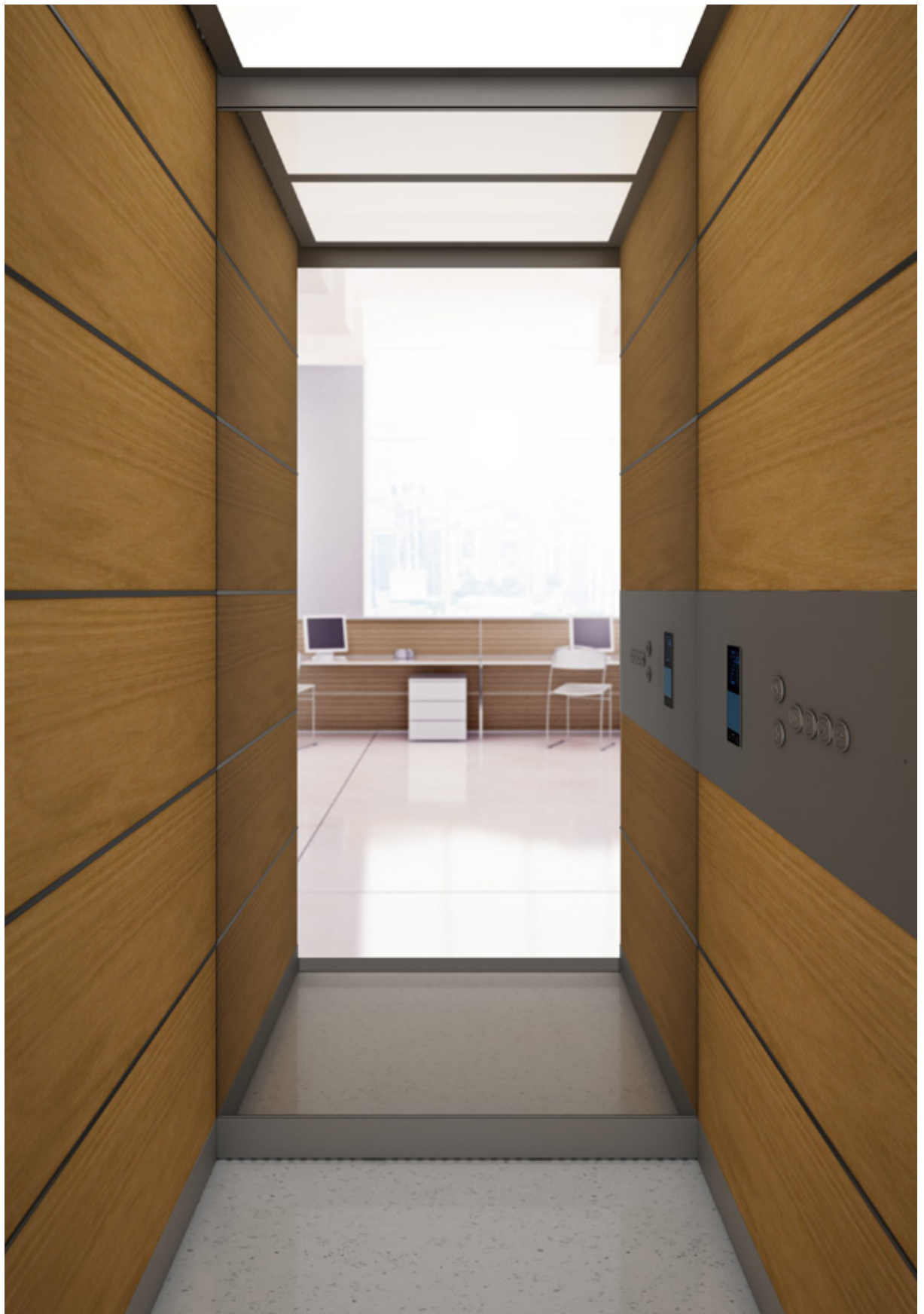


Homelifts



Simple life



From the roots of Sele, Sele Lift is born.
More than 35 years of excellence in the design and manufacture of lift systems are complemented by the strength of a large international industrial group.

Sele has built its reputation on a passion for innovation and quality, offering customised solutions for lifts, goods lifts and domestic elevators since 1989. In 2023 Boato Holding, a leader in the engineering sector, relaunched Sele Lift.

This partnership reinforces the commitment to developing in-house know-how, guaranteeing even safer and more efficient products. With the support of Boato Holding, Sele Lift will continue to grow, offering increasingly innovative lifting solutions that improve people's lives and meet the environmental challenges of our time.

Discover how Sele Lift can elevate your world.

ENERGY EFFICIENCY

+ COMFORT

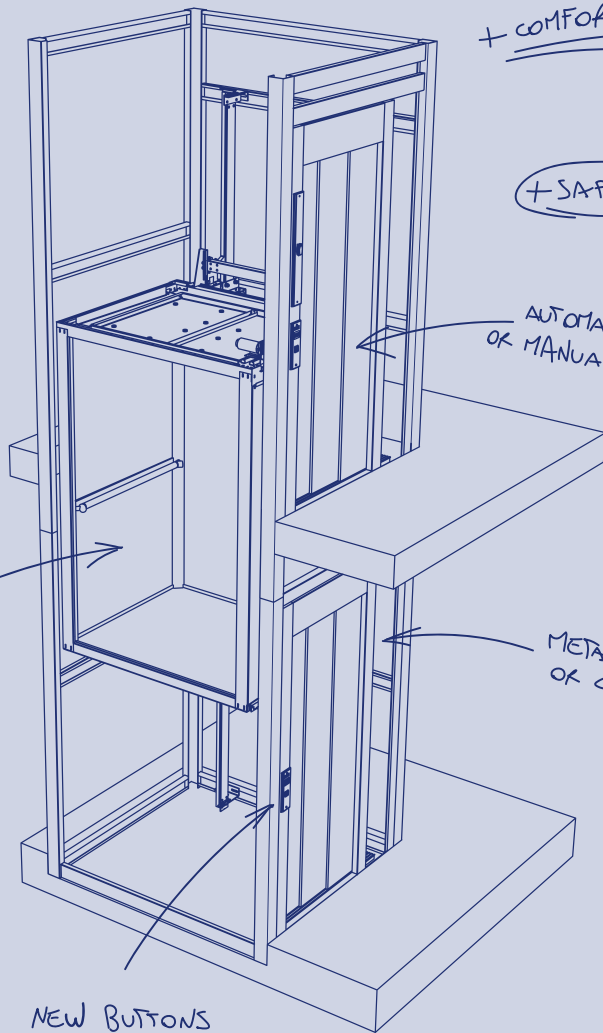
+ SAFETY

AUTOMATIC SLIDING
OR MANUAL SWING DOORS

NEW CABINS
AND MATERIALS

METALLIC STRUCTURE
OR CONCRETE'S SHAFT

NEW BUTTONS



**SHP**

SELE homelifts. Safety, comfort, technology.

**SHE**

The new homelifts allow users to succeed vertical transportation needs through a wide range of solutions both technical and aesthetical. For the best flexibility and value for price Sele Lift propose the new SHP hydraulic homelift, compatible with very small shafts. For the best eco-friendly choice, Sele Lift proposes the SHE traction homelift, with very low power consumption and smooth riding thanks to the innovative gearless motor traction system.



Homelifts are designed for:

- ✔ Private houses
- ✔ Commercial and public small buildings
for the elimination of architectural barriers
- ✔ Low rise buildings
- ✔ Buildings with walking areas under the lift shaft

Main features of our homelifts.



RIDING COMFORT

Guarantee a pleasant riding experience is one of the Sele Lift priority for all the products. The traction model SHE, thanks to the innovative motors, guarantee the best level of silence, stopping accuracy and riding smoothness.

The SHP, hydraulic, is also available with the two speed option.



LOW ENERGY CONSUMPTION

Our homelifts are all class A-VDI*4707 efficiency.

Powered by the standard single phase 220-240V supply.

Homelifts are made to minimize the power consumption during both riding and stand-by.



SAFETY

Follow the standard safety regulations and design the products with "safety first" in mind is a Sele Lift feature.

All the homelifts are equipped with certified safety components.



REDUCED SPACES

The technical solutions engineered by Sele Lift allow to install the homelifts in very reduced spaces.

Reduced pit and headroom for both the homelifts.

Thanks to the high technical solutions, it is possible to have pit and headroom of extremely small dimensions, making it easy and flexible to install Sele Lift homelifts inside any building, satisfying all domestic vertical transportation needs, even in existing buildings.

* VDI are guidelines issued by the german engineers association and then do not replace the ISO standards.



Walls **EVO**

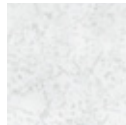
The EVO cabin is characterized by minimalist and contemporary layout without corners, flush-mounted operating panel and skirting only in the case of a full-wall mirror.

It is the right choice for those who want a modern cabin.

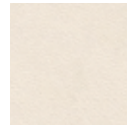
Skinplate



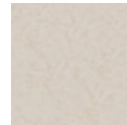
A49PP
Bianco lucido



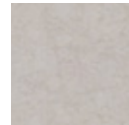
PPS10
Marmorizzato bianco



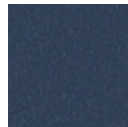
A13
Sabbia



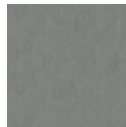
PPS11
Marmorizzato beige



PPS6
Marmorizzato grigio



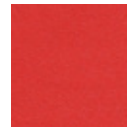
B10SMA
Blu notte



F12PPS
Simil inox



G4SA
Giallo arancio

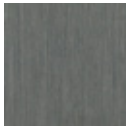


R2
Rosso

Stainless Steel AISI304



Shiny



Brushed



Shiny linen pattern



Shiny square pattern

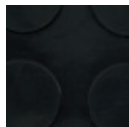
RAL



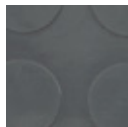
Other colors
on request

Floors **EVO**

Studded Rubber



Nero

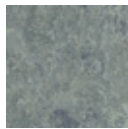


Grigio

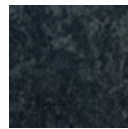
Linoleum



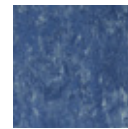
Sabbia



Grigio



Nero



Blu

Granit

Colori
su richiesta

Recessed

Max 20 mm

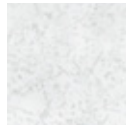
Walls CLASSICA

The CLASSICA cabin is characterized by its simple layout, without corners, with a full-height push-button panel and lower protection skirtings on all sides of the cabin. It is the right choice for those who want a cabin that is aesthetically beautiful, but also structurally robust.

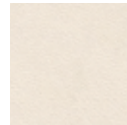
Skinplate



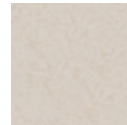
A1
Bianco bucciato



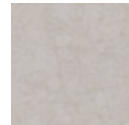
PPS10
Marmorizzato bianco



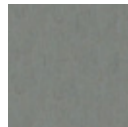
A13
Sabbia



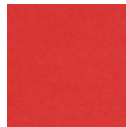
PPS11
Marmorizzato beige



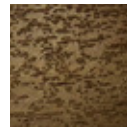
PPS6
Marmorizzato grigio



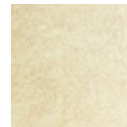
F12PPS
Simil inox



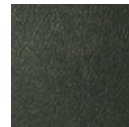
R2
Rosso



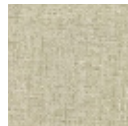
DL73
Effetto legno Noce



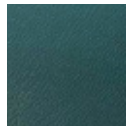
DT26
Effetto granito Rosato



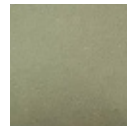
N21
Bucciato Londra



DT63
Effetto tessuto Grigio



B13
Bucciato Azzurro

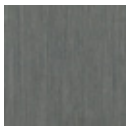


N14
Bucciato Grigio

Stainless Steel AISI304



Shiny



Brushed



Shiny linen pattern

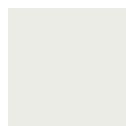


Shiny square pattern

RAL



7035 B/T



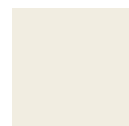
9003 L/S



9005 L/S



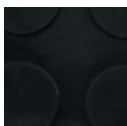
9006 L/S



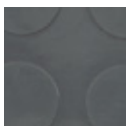
9010 B/T

Floors CLASSICA

Studded Rubber

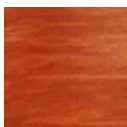


Nero

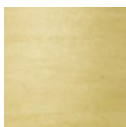


Grigio

Linoleum



Mattone



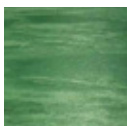
Beige



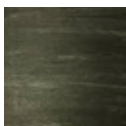
Grigio



Blu



Verde



Antracite

Granit

Other colors
on request

Recessed

Max 20 mm

Complements

Ceiling



2 Spotlights



4 Spotlights

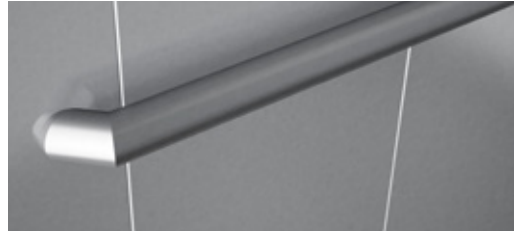


Starry

Handrail

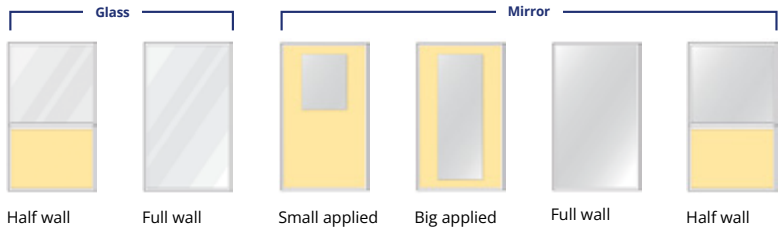


Straight on wall handrail full lenght
Brushed or shiny stainless steel.



Connected handrail
Brushed or shiny stainless steel.

Glass and Mirror



Glass is also available in: etched, milky white, grey smoked.
Mirror is also available in grey smoked.

Customization

Vertical cabin operating panel



Standard

Dot matrix position indicators



TFT position indicator



Theme 1

Theme 2

Theme 3



Theme 4

Theme 5

Landing position indicator



TFT in Plate

Landing operating panels



Plate

Also available
with integrated
MiniDot indicator

Pushbuttons



Round pushbutton
with red or blue lighting



Dual light round pushbutton



Dual light round pushbutton Australia



Square pushbutton
with red or blue lighting



Oval pushbutton with red or blue lighting

Manual swing landing doors

Iron

- ✔ Anti-rust paint color RAL 7032 (standard);
- ✔ RAL paint in a choice of colours;
- ✔ Stainless steel cladding on landing side;
- ✔ Stainless steel cladding on both sides;
- ✔ Wood cladding (landing side or both sides);
- ✔ Fire-rated doors according to EN81-58: EI 120 (C1 only).



C1 door
windowless



V1 door window
100 x 550 mm



P1 door
(the dimension of
the window follows
the door opening)



P2 door
(the dimension of
the window follows
the door opening)

Anodized aluminium with glass panel



- Door Glass panel:
- Clear
 - Coloured (smoked, grey, bronze)
- Configuration for 4+4+0.76 pane
- Door jamb and frame:
- RAL paint finish in a choice of colours
 - Anodised aluminium

Iron jamb and full glass door panel



- Door Glass Panel:
- Clear
 - Stoptsol bronze
- Etched
- Jamb:
- RAL paint finish in a choice of colours
 - Stainless steel cladding brushed finish
 - Stainless steel cladding shiny finish

Automatic side-opening doors



2 panels with side opening

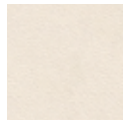
Door opening mm: 600 - 650
- 700 - 750 - 800 - 850 - 900

3 panels side opening

2 or 4 panels centre opening

Finishings

- Anti-rust paint RAL 7032 (standard)
- RAL paint, colour on request (Only with Sele Lift structure)
- Skinplate and stainless steel (See car finishes)



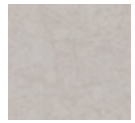
A13
Sabbia



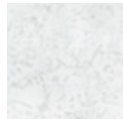
A49PP
Bianco lucido



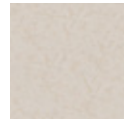
F12PPS
Simil inox



PPS6
Marmorizzato
grigio



PPS10
Marmorizzato
bianco



PPS11
Marmorizzato
beige



Glass framed door



Full glass panel

Glass framed door

- Dimensions on request
- Clear glass (standard) or colours on request
- Door frame finishes:
 - Colour on request
 - Stainless steel

Full glass panel

- Dimensions on request
- Clear glass (standard) or colours on request
- Door frame and lower guide finishes:
 - Colour on request
 - Stainless steel

Accessories

CONTROL

Automatic push button (Optional)

The controller stops the cabin at the selected floor single push.

SAFETY

Emergency lighting (Standard)

Determines the ignition of an emergency light in the cabin in case of power cut.

Photocell barrier (Optional)

A photocell barrier detects (along the full height) object or people that cross the sill and immediately activates blocking mechanisms.

ARD (Optional)

Enables automatic arrival of the cabin at floor in the event of a power cut.

Telephone dialler for land line or mobile (Optional)

In the event of passengers getting trapped, it assures a permanent telephone connection to the emergency number.

ENERGY SAVING

Cabin light operation (Standard)

The cabin light is switched off after a set time to permit energy savings; it is automatically switched back on in the event of a call.

Ceiling with led lighting

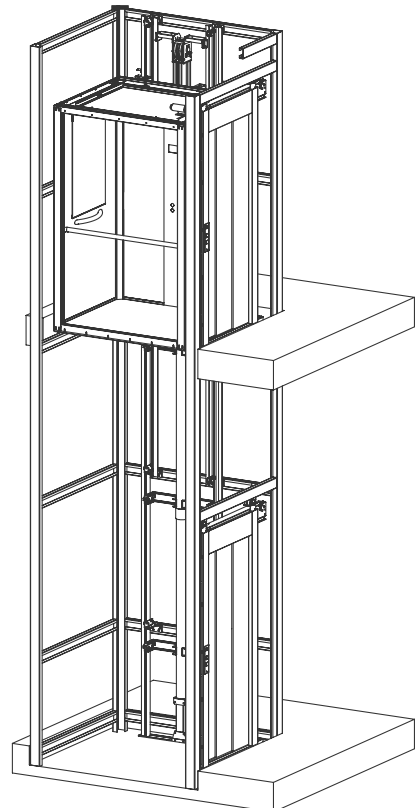
Results in improved performance in terms of lifespan, efficiency and energy savings.

Main features **SHP**

Hydraulic homelift

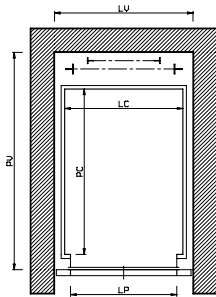
Directive	European Machinery Directive 2006/42/EC
Rated load up to (kg)	400 (500*)
Max travel (m)	13,4 (16,9*)
Max number of stops	8
Speed m/s	0,15
Entrances	1, 2, 3
Landing doors	Automatic side opening or manual swing
Cabin doors	Automatic sliding, folding manual/automatic, no door
Door opening (mm)	500 - 1200
Control	Automatic pushbutton at landings, automatic pushbutton or hold to run from the cabin
Power supply	220 Volts single phase /50Hz
Machinery	Indirect acting piston
Drive system	1 or 2 speeds
Controller	In a cabinet
Std distance between guide brackets (mm)	1500
Frame	Rucksack
Cabin height	std 2100
Pit Depth (mm)	150
Std / Min headroom (mm)	2300 without cabin door(or with manual folding door)

* with limitations



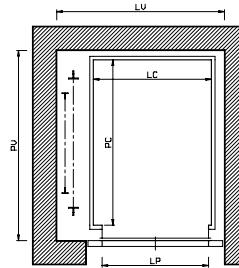
SHP No cabin doors

1 entrance rear frame



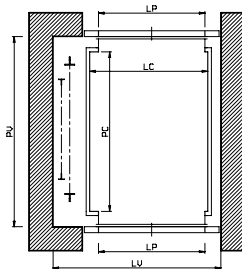
	load (kg)		
	150	270	270
LC	550	830	900
PC	540	1200	1200
LP	500	750	800
LV	710	990	1050
PV	950	1580	1580

1 entrance side frame



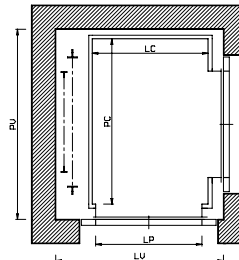
	load (kg)		
	150	250	385
LC	550	800	1100
PC	580	1200	1400
LP	500	750	900
LV	900	1150	1450
PV	770	1390	1590

2 opposite entrances



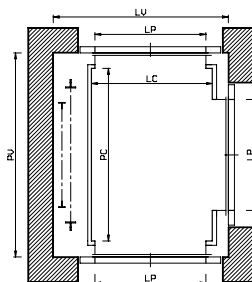
	load (kg)		
	150	250	385
LC	550	800	1100
PC	580	1200	1400
LP	500	750	900
LV	900	1150	1450
PV	800	1420	1620

2 adjacent entrances



	load (kg)		
	150	2360	385
LC	580	1200	1100
PC	600	1200	1400
LP	500	800	900
LV	970	1590	1490
PV	790	1390	1590

3 entrances



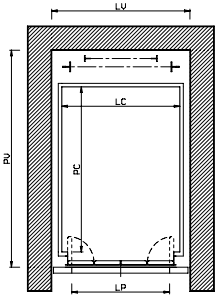
	load (kg)		
	200	360	385
LC	580	1200	1100
PC	600	1200	1400
LP	500	800	900
LV	970	1590	1490
PV	820	1420	1620

all dimension in mm

LC cabin width
PC cabin depth
LP door opening
LV shaft width
PV shaft depth

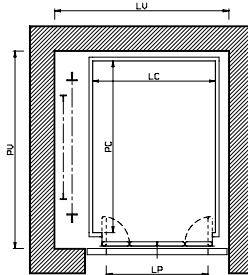
SHP Folding doors

1 entrance rear frame



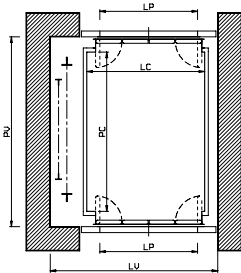
	load (kg)		
	150	270	270
LC	580	830	900
PC	540	1200	1200
LP	500	750	800
LV	740	990	1050
PV	980	1640	1640

1 entrance side frame



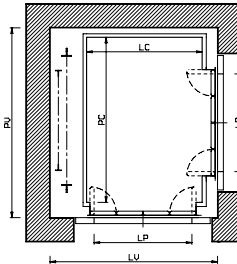
	load (kg)		
	150	270	385
LC	580	830	1100
PC	580	1200	1400
LP	500	750	900
LV	930	1180	1450
PV	830	1450	1650

2 opposite entrances



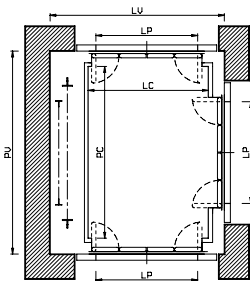
	load (kg)		
	150	270	385
LC	580	830	1100
PC	580	1200	1400
LP	500	750	900
LV	930	1180	1450
PV	920	1540	1740

2 adjacent entrances



	load (kg)		
	150	360	385
LC	620	1200	1100
PC	620	1200	1400
LP	500	800	900
LV	1060	1640	1540
PV	870	1450	1650

3 entrances



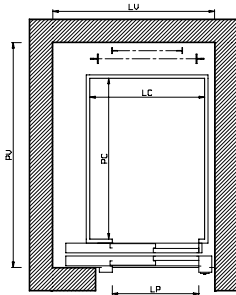
	load (kg)		
	150	2360	385
LC	620	1200	1100
PC	620	1200	1400
LP	500	800	900
LV	1060	1640	1540
PV	960	1540	1740

all dimension in mm

- LC cabin width
- PC cabin depth
- LP door opening
- LV shaft width
- PV shaft depth

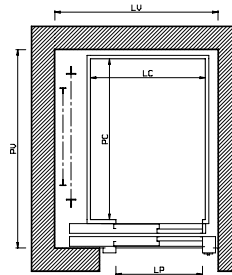
SHP Automatic doors 2 panels

1 entrance rear frame



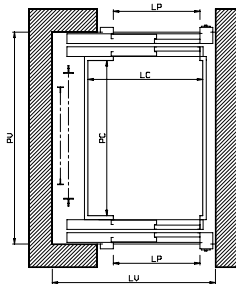
	load (kg)		
	150	270	385
LC	1050	900	1200
PC	540	1200	1200
LP	700	750	800
LV	1250	1300	1400
PV	1080	1740	1740

1 entrance side frame



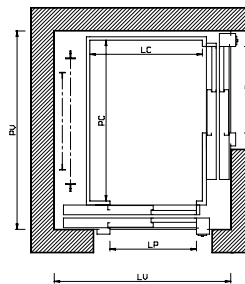
	load (kg)		
	150	270	385
LC	900	900	1100
PC	580	1200	1400
LP	700	750	900
LV	1250	1300	1550
PV	920	1550	1750

2 opposite entrances



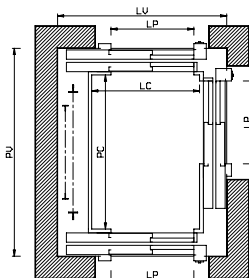
	load (kg)		
	150	270	385
LC	900	900	1100
PC	600	1200	1400
LP	700	750	900
LV	1250	1300	1550
PV	1120	1720	1920

2 adjacent entrances



	load (kg)		
	225	360	385
LC	900	1200	1100
PC	1000	1200	1400
LP	700	800	900
LV	1430	1730	1750
PV	1350	1550	1750

3 entrances



	load (kg)		
	300	360	385
LC	900	1200	1100
PC	1020	1200	1400
LP	700	800	900
LV	1430	1730	1750
PV	1540	1720	1920

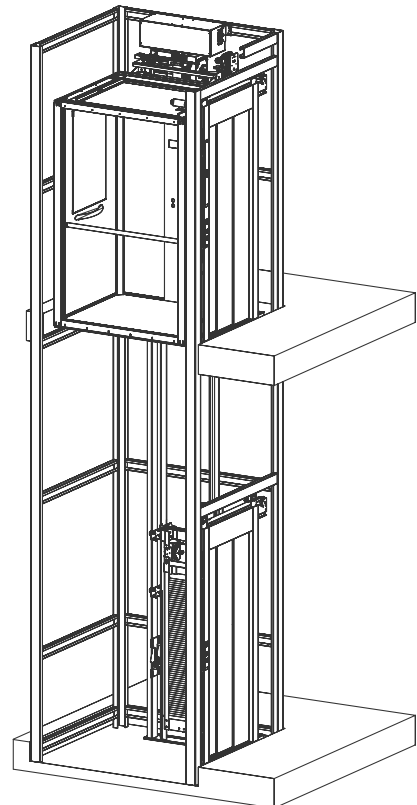
all dimension in mm

LC cabin width
PC cabin depth
LP door opening
LV shaft width
PV shaft depth

Main features **SHE**

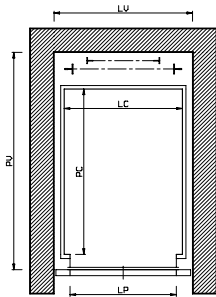
Traction with gearless motor homelift

Speed m/s	European Machinery Directive 2006/42/EC
Rated load up to (kg)	400
Max travel (m)	22
Max number of stops	8
Speed m/s	0,15
Entrances	1, 2, 3
Landing doors	Automatic side opening or manual swing
Cabin doors	Automatic sliding, folding manual/automatic, no door
Door opening (mm)	500 - 1200
Control	Automatic pushbutton at landings, automatic pushbutton or hold to run from the cabin
Power supply	220 Volts single phase /50Hz
Machinery	2:1 ratio <i>Gearless</i>
Drive system	VVF
Controller	Embedded in the shaft and in a console on the door frame
Std distance between guide brackets (mm)	1500
Frame	Rucksack
Cabin height (mm)	std 2100
Pit Depth (mm)	150
Std / Min headroom (mm)	2750/2500 (with cabin > 800 x1200)



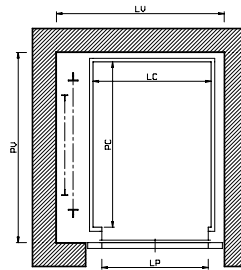
SHE No cabin doors

1 entrance rear frame



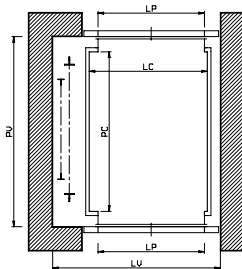
	load (kg)		
	200	270	270
LC	830	830	900
PC	540	1200	1200
LP	750	750	800
LV	1000	1000	1050
PV	950	1610	1610

1 entrance side frame



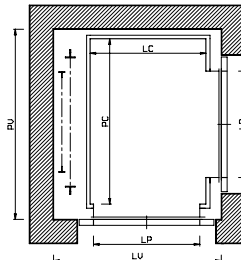
	load (kg)		
	200	250	385
LC	550	800	1100
PC	910	1200	1400
LP	500	750	900
LV	930	1180	1480
PV	1100	1390	1590

2 opposite entrances



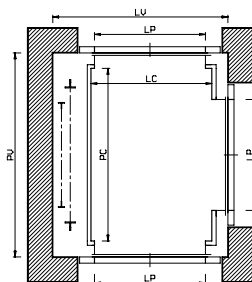
	load (kg)		
	200	250	385
LC	550	800	1100
PC	910	1200	1400
LP	500	750	900
LV	930	1180	1480
PV	1130	1420	1620

2 adjacent entrances



	load (kg)		
	200	360	385
LC	580	1200	1100
PC	910	1200	1400
LP	500	800	900
LV	990	1610	1510
PV	1100	1390	1590

3 entrances



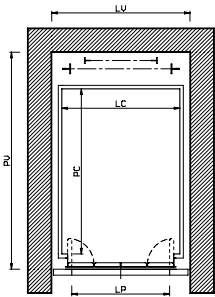
	load (kg)		
	200	360	385
LC	580	1200	1100
PC	930	1200	1400
LP	500	800	900
LV	990	1610	1510
PV	1150	1420	1620

all dimension in mm

- LC cabin width
- PC cabin depth
- LP door opening
- LV shaft width
- PV shaft depth

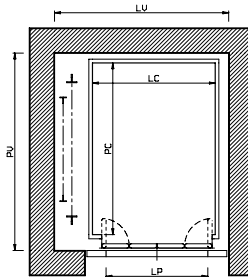
SHE Folding doors

1 entrance rear frame



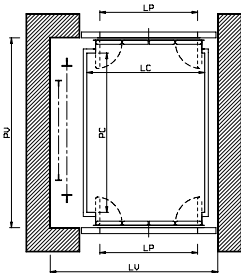
	load (kg)		
	200	270	270
LC	830	830	900
PC	540	1200	1200
LP	750	750	800
LV	1000	1000	1000
PV	1000	1660	1660

1 entrance side frame



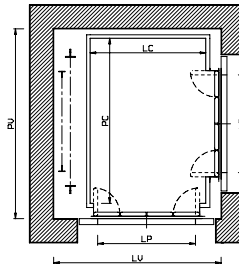
	load (kg)		
	200	270	385
LC	580	830	1100
PC	850	1200	1400
LP	500	750	900
LV	960	1210	1480
PV	1100	1450	1650

2 opposite entrances



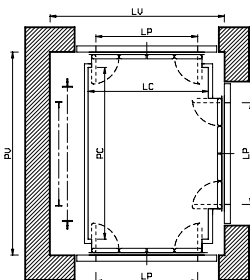
	load (kg)		
	200	270	385
LC	580	830	1100
PC	850	1200	1400
LP	500	750	900
LV	960	1210	1480
PV	1170	1540	1740

2 adjacent entrances



	load (kg)		
	150	360	385
LC	620	1200	1100
PC	620	1200	1400
LP	500	800	900
LV	1080	1640	1560
PV	1100	1450	1650

3 entrances



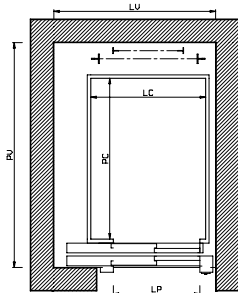
	load (kg)		
	150	360	385
LC	620	1200	1100
PC	870	1200	1400
LP	500	800	900
LV	1080	1640	1560
PV	1200	1540	1740

all dimension in mm

- LC cabin width
- PC cabin depth
- LP door opening
- LV shaft width
- PV shaft depth

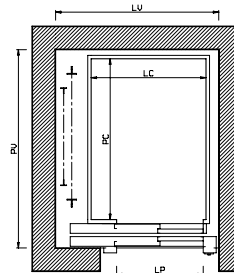
SHE Automatic doors 2 panels

1 entrance rear frame



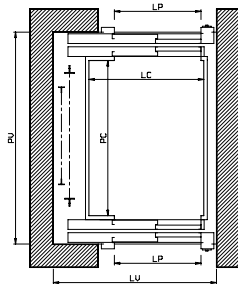
	load (kg)		
	200	270	385
LC	1050	900	1200
PC	540	1200	1200
LP	700	750	800
LV	1250	1300	1400
PV	1100	1760	1760

1 entrance side frame



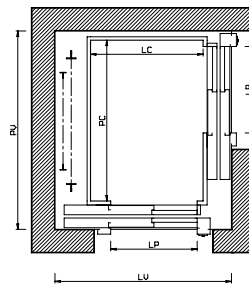
	load (kg)		
	225	270	385
LC	870	900	1100
PC	920	1200	1400
LP	700	750	900
LV	1250	1300	1550
PV	1250	1550	1750

2 opposite entrances



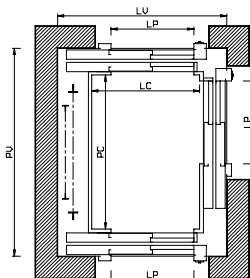
	load (kg)		
	225	270	385
LC	870	900	1100
PC	930	1200	1400
LP	700	750	900
LV	1250	1300	1550
PV	1450	1720	1920

2 adjacent entrances



	load (kg)		
	300	360	385
LC	870	1200	1100
PC	1000	1200	1400
LP	700	800	900
LV	1430	1760	1750
PV	1350	1550	1750

3 entrances



	load (kg)		
	300	360	385
LC	870	1200	1100
PC	1020	1200	1400
LP	700	800	900
LV	1430	1760	1750
PV	1540	1720	1920

all dimension in mm

LC cabin width
PC cabin depth
LP door opening
LV shaft width
PV shaft depth

All the informations, technical data, design, colors and any other on this document, including physical samples are given to the customer as example only and then it cannot be considered binding.

Any sample or printed color cannot be considered definitive and the final result may change due to different material, color or finish.

Sele Lift reserves the right to change the technical and aesthetical features without notice.



Sele Lift srl
Via 25 Aprile 1945, n°63
40055 Castenaso (BO)
T.+39.051.60.59.801
info@Selelift.com
www.Selelift.com



ISO 9001:2015 - nr 9102.SE10
All. XI 2014/33/UE - nr I0305
ISO 45001:2018 - nr 9192.se14



LIFTS



HOME LIFTS



GOODS
LIFTS



MODERNISATIONS

selelift.com